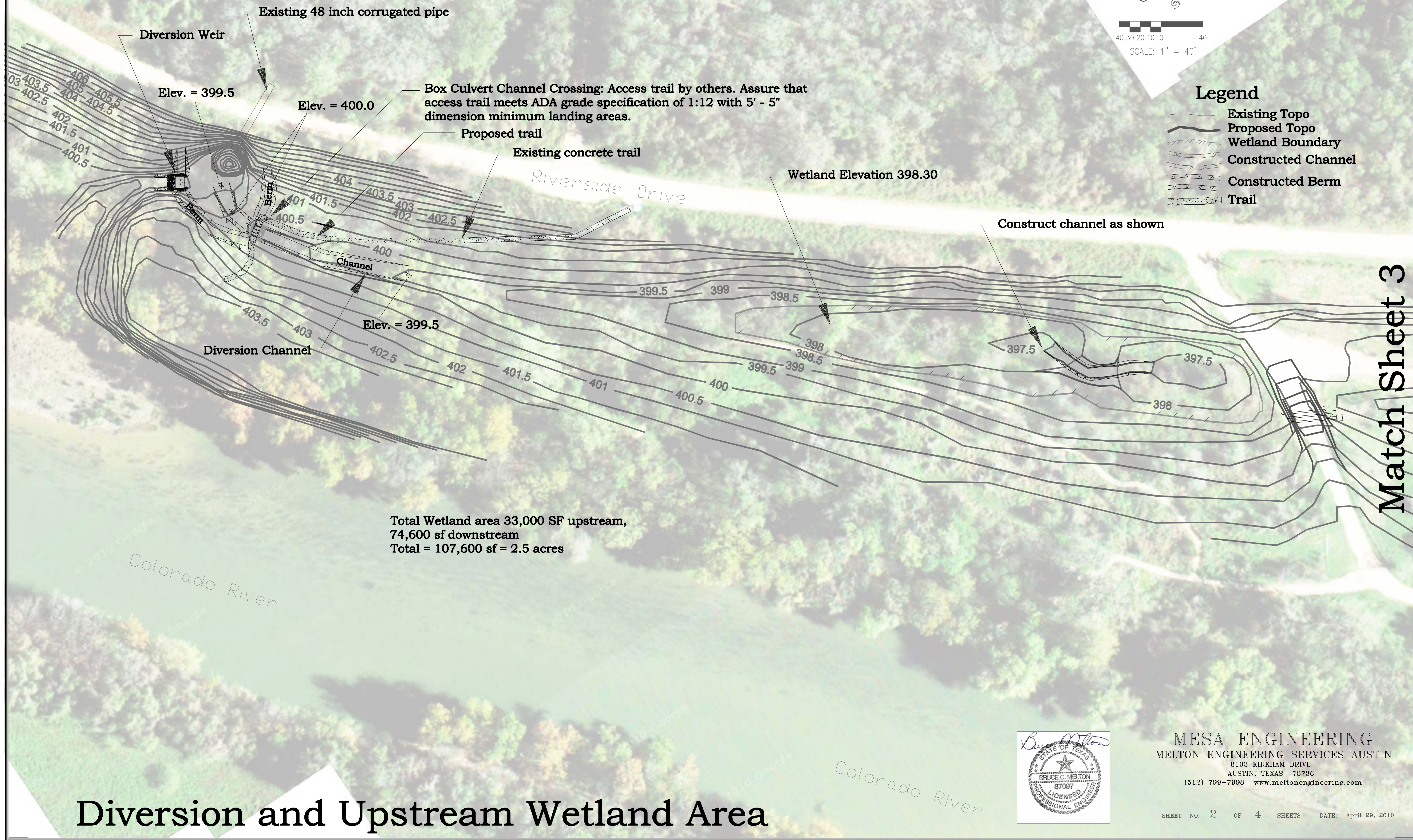
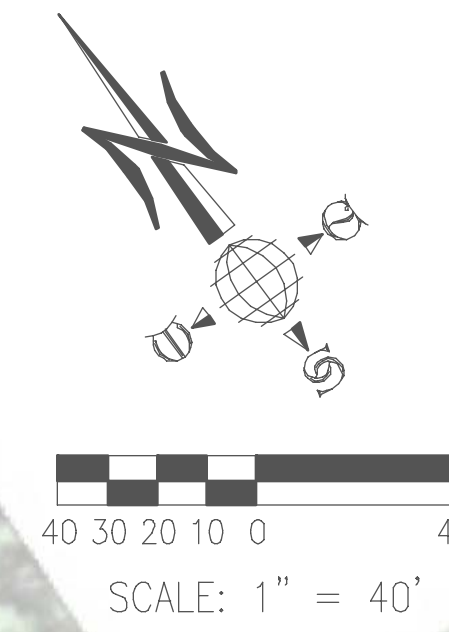


Lost Pines Nature Trails - Colorado River Refuge

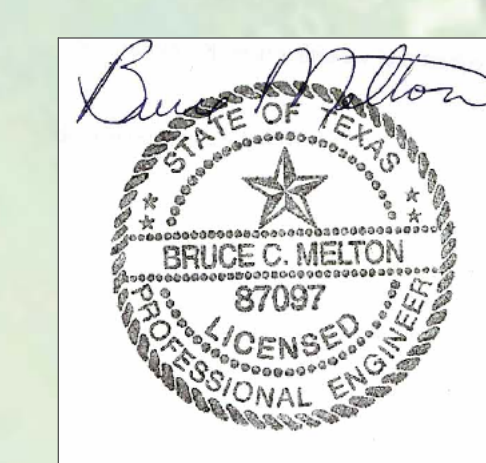


Total Wetland area 33,000 SF upstream,
74,600 sf downstream
Total = 107,600 sf = 2.5 acres

- Legend**
- Existing Topo
 - Proposed Topo
 - Wetland Boundary
 - Constructed Channel
 - Constructed Berm
 - Trail

Match Sheet 3

Diversion and Upstream Wetland Area



MESA ENGINEERING
 MELTON ENGINEERING SERVICES AUSTIN
 8103 KIRKHAM DRIVE
 AUSTIN, TEXAS 78736
 (512) 799-7998 www.meltonengineering.com