





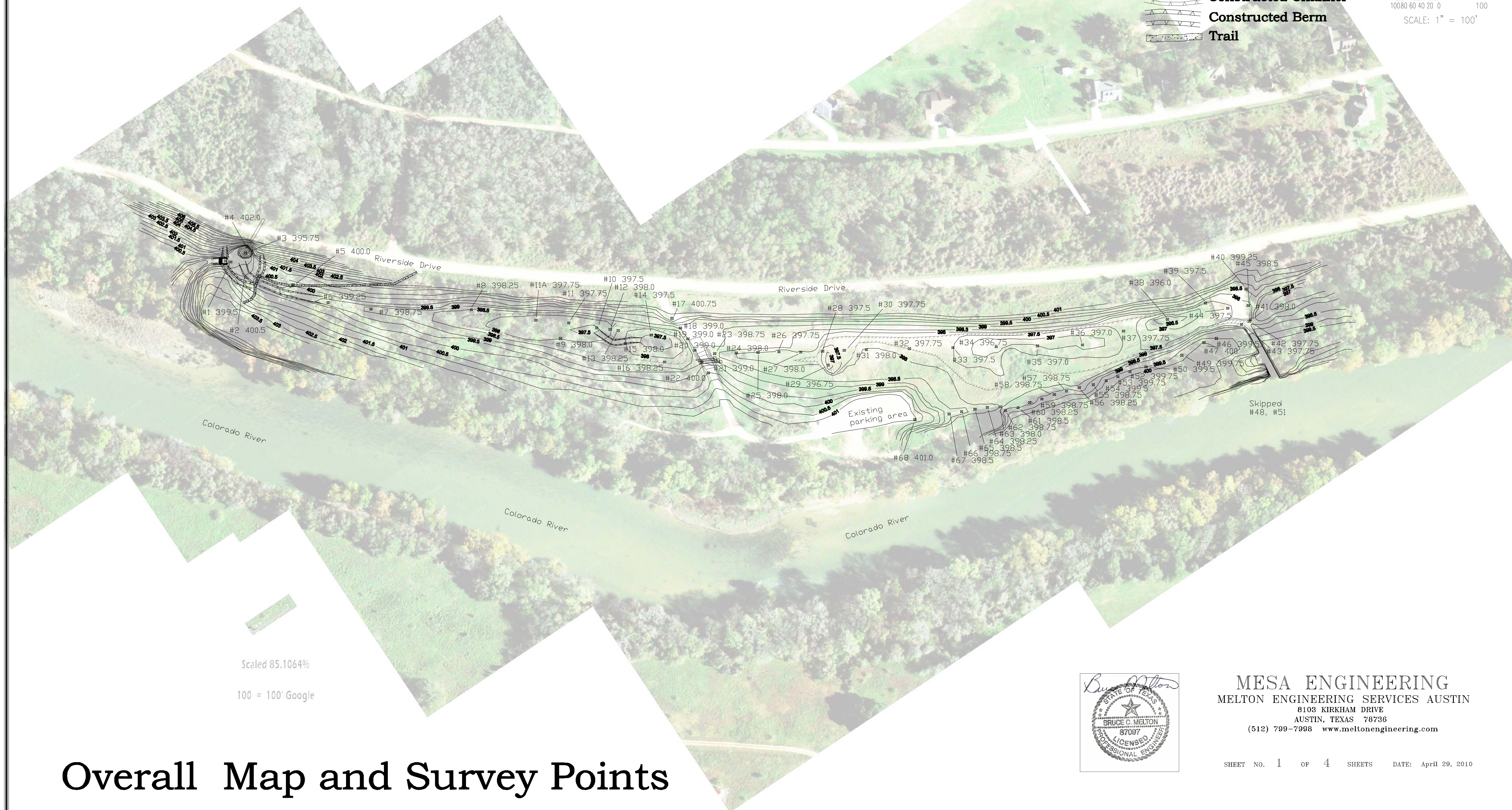
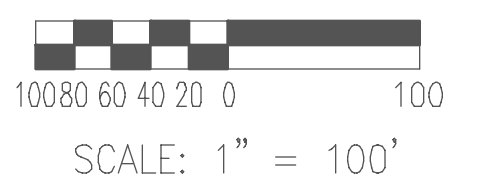


Lost Pines Nature Trails - Colorado River Refuge

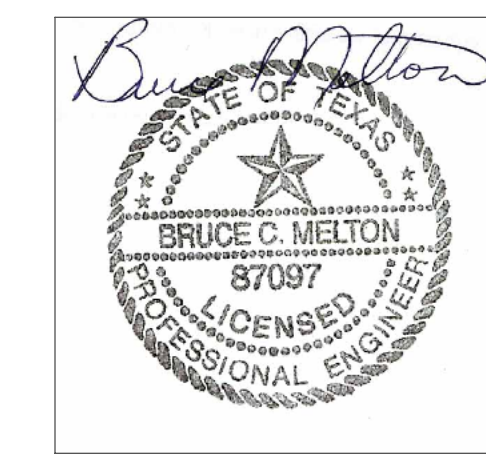
Legend

-  Existing Topo
-  Proposed Topo
-  Wetland Boundary
-  Constructed Channel
-  Constructed Berm
-  Trail



Scaled 85.1064%

100 = 100' Google



MESA ENGINEERING
 MELTON ENGINEERING SERVICES AUSTIN
 8103 KIRKHAM DRIVE
 AUSTIN, TEXAS 78736
 (512) 799-7998 www.meltonengineering.com

SHEET NO. 1 OF 4 SHEETS DATE: April 29, 2010

Overall Map and Survey Points